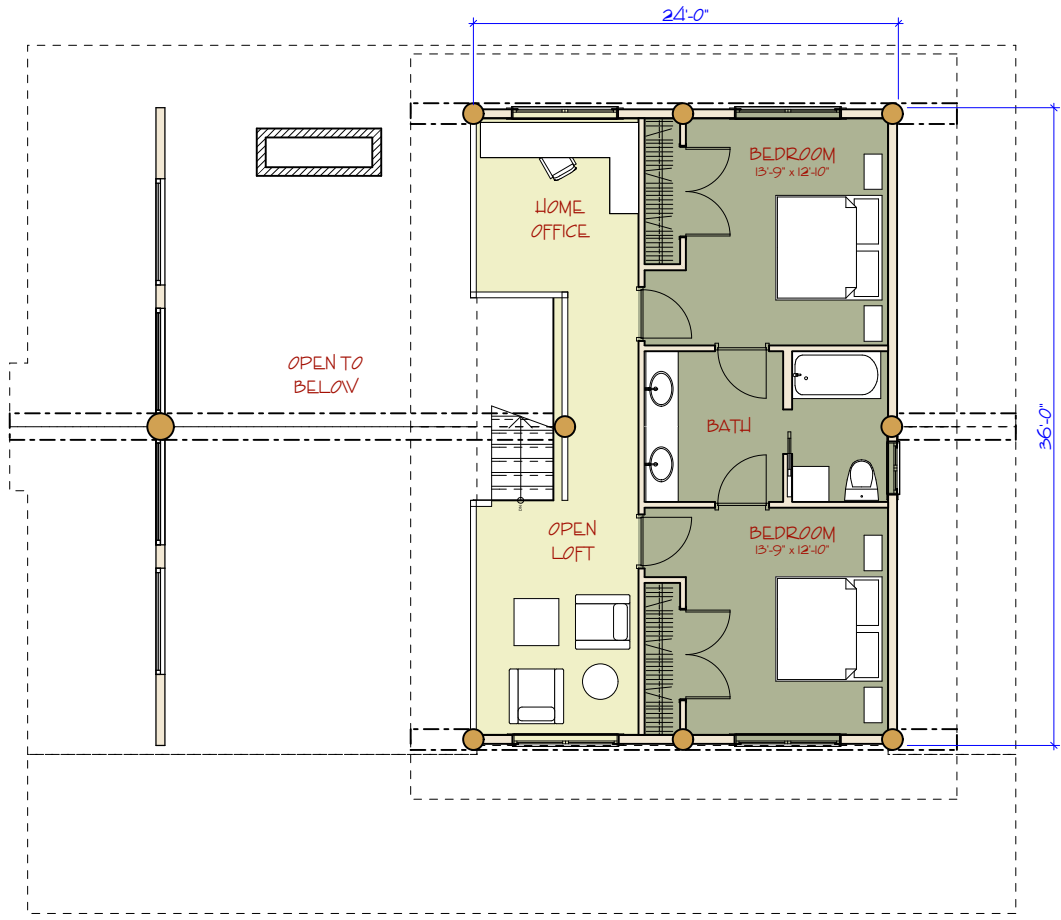


MAIN FLOOR PLAN

<p>LEAD OFFICE 351 HODGSON ROAD WILLIAMS LAKE, BC CANADA V2G 3P7 PHONE: 250-392-5577 FAX: 250-392-5581 TOLL FREE: 1-877-822-5647 www.pioneerloghomesofbc.com</p>		<p>THE WHISPERING PINES</p> <p>FIRST FLOOR: 1512 sq ft LOFT FLOOR: 805 sq ft TOTAL LIVING AREA: 2,317 sq ft</p>
--	--	--



LOFT FLOOR PLAN

<p>HEAD OFFICE 351 HODGSON ROAD WILLIAMS LAKE, BC CANADA V2G 3P7 PHONE: 250-392-5577 FAX: 250-392-5581 TOLL FREE: 1-877-822-5647 www.pioneerloghomesofbc.com</p>		<p>THE WHISPERING PINES</p> <p>FIRST FLOOR: 1512 sq ft LOFT FLOOR: 805 sq ft TOTAL LIVING AREA: 2317 sq ft</p>
--	--	---